

The background of the slide features a semi-transparent image of two athletes, a man and a woman, wearing full-body motion capture suits. They are standing in a dynamic pose, with the man on the left and the woman on the right. The suits are dark with various sensors and markers attached. The background is a solid red color with a diagonal white line running from the top right towards the center.

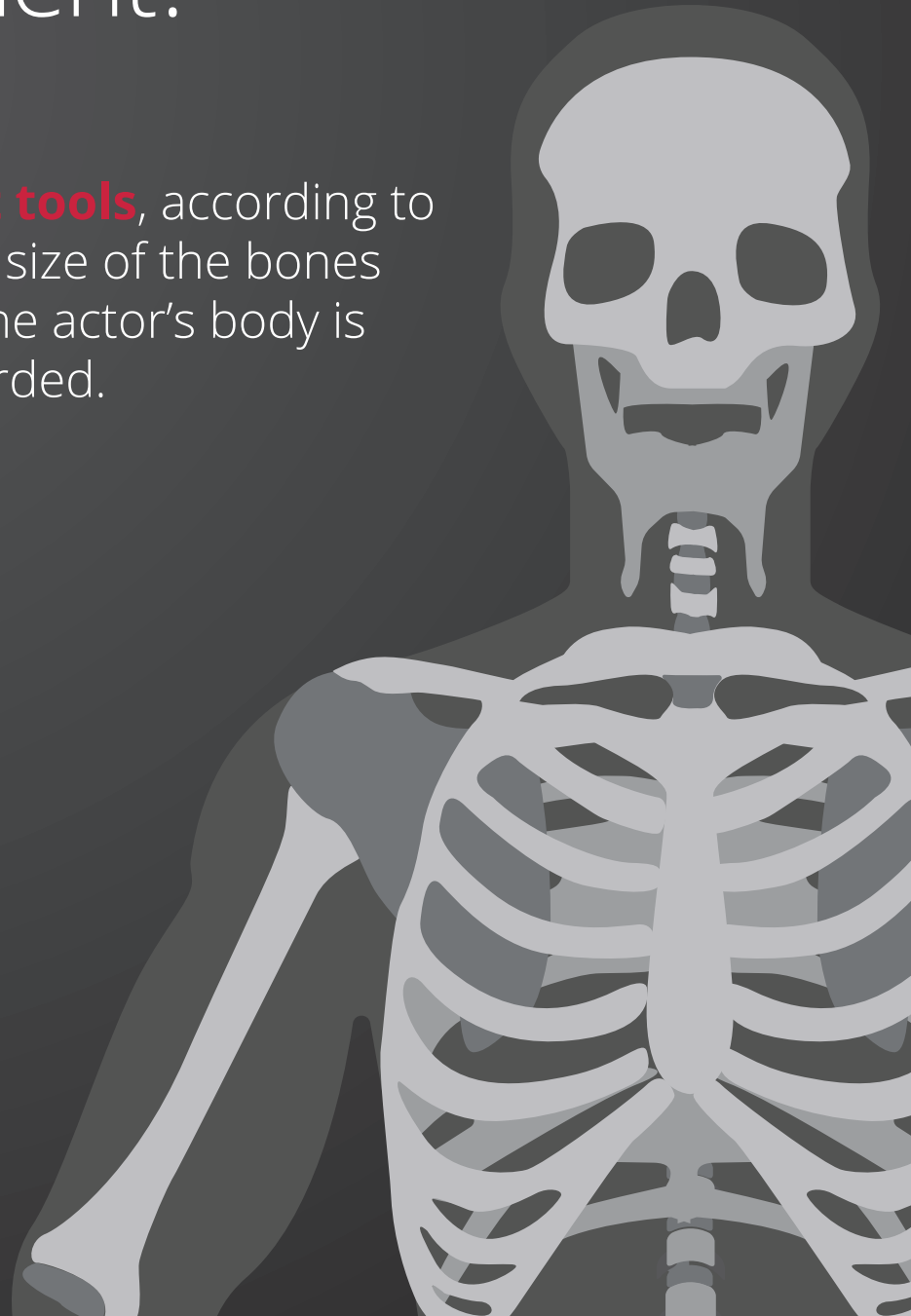
NOITOM™

Set Your World in Motion™

Skeleton
measurement

... What is skeleton measurement?

Use **measurement tools**, according to the definition of the size of the bones in various parts of the actor's body is measured and recorded.



— NOITOM™ —

... The skeleton measurement definition

NOITOM™

MEANING OF SKELETON MEASUREMENTS

Accurate human
skeleton data,
Software generates the
corresponding values
based on the bones of
the human body model

More accurate
reproduction of the
characters motion
posture

Improve the accuracy of
character displacement
reduction

... Skeleton measurement method

NOITOM™

SKELETON MEASURING PREPARATION:

- Tape measure
- Squares
- Markers (such as ink pen)
- One side of a wall or glass

MEASURING METHOD:

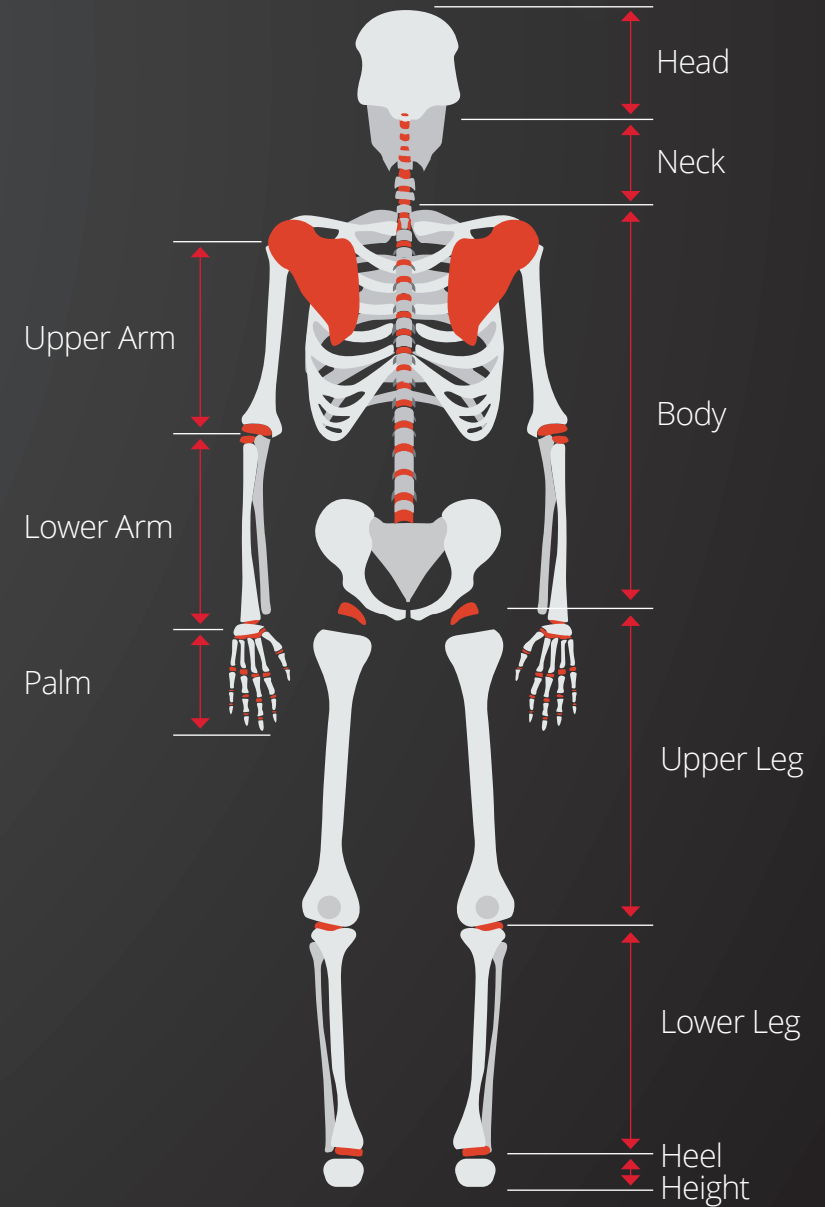
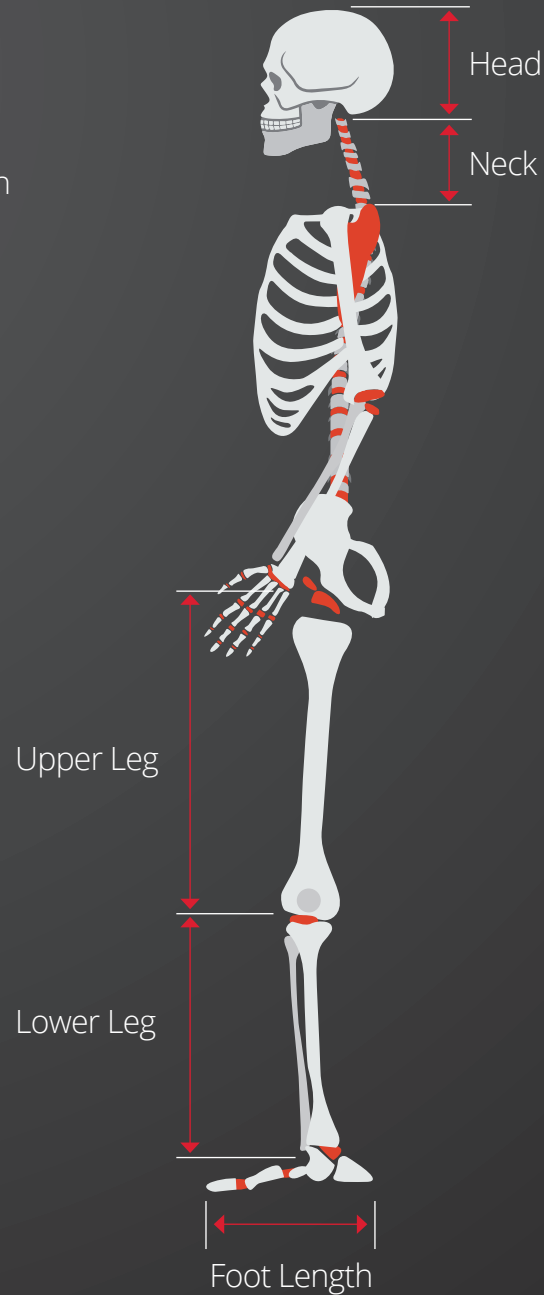
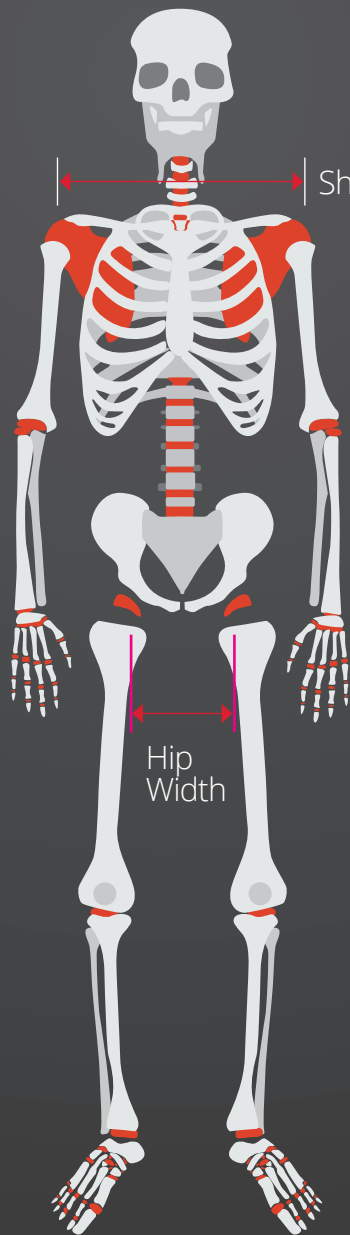
- Ask the actor to stand in a t-pose near the wall, measure from top to bottom, left to right
- Use the square to found out all the orientation of every joint, and mark it down with a marker pen
- Measure the length of each part with a tape measure.
- Unit: cm

SKELETON MEASUREMENT PART:

- Head
- Neck
- Shoulder width
- Upper arm
- Forearm
- Palm
- Hip width
- Body
- Upper leg
- Lower leg
- Heel height
- Foot length

... Measurement parts

NOITOM™



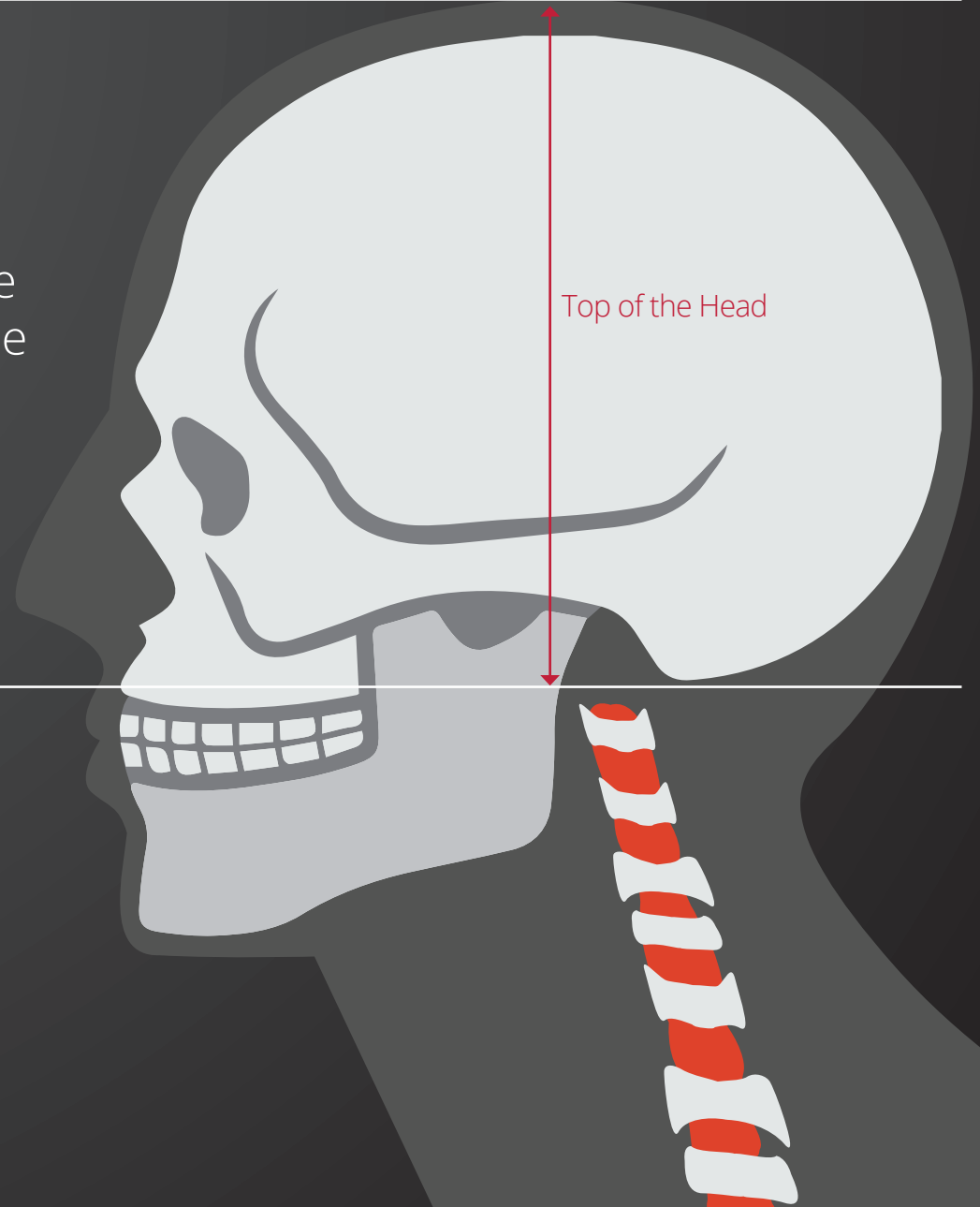
... Length definition

Head

NOITOM™

The length of the head is measure the very top of the head to the line shows in the diagram

The line from the ear to upper lip

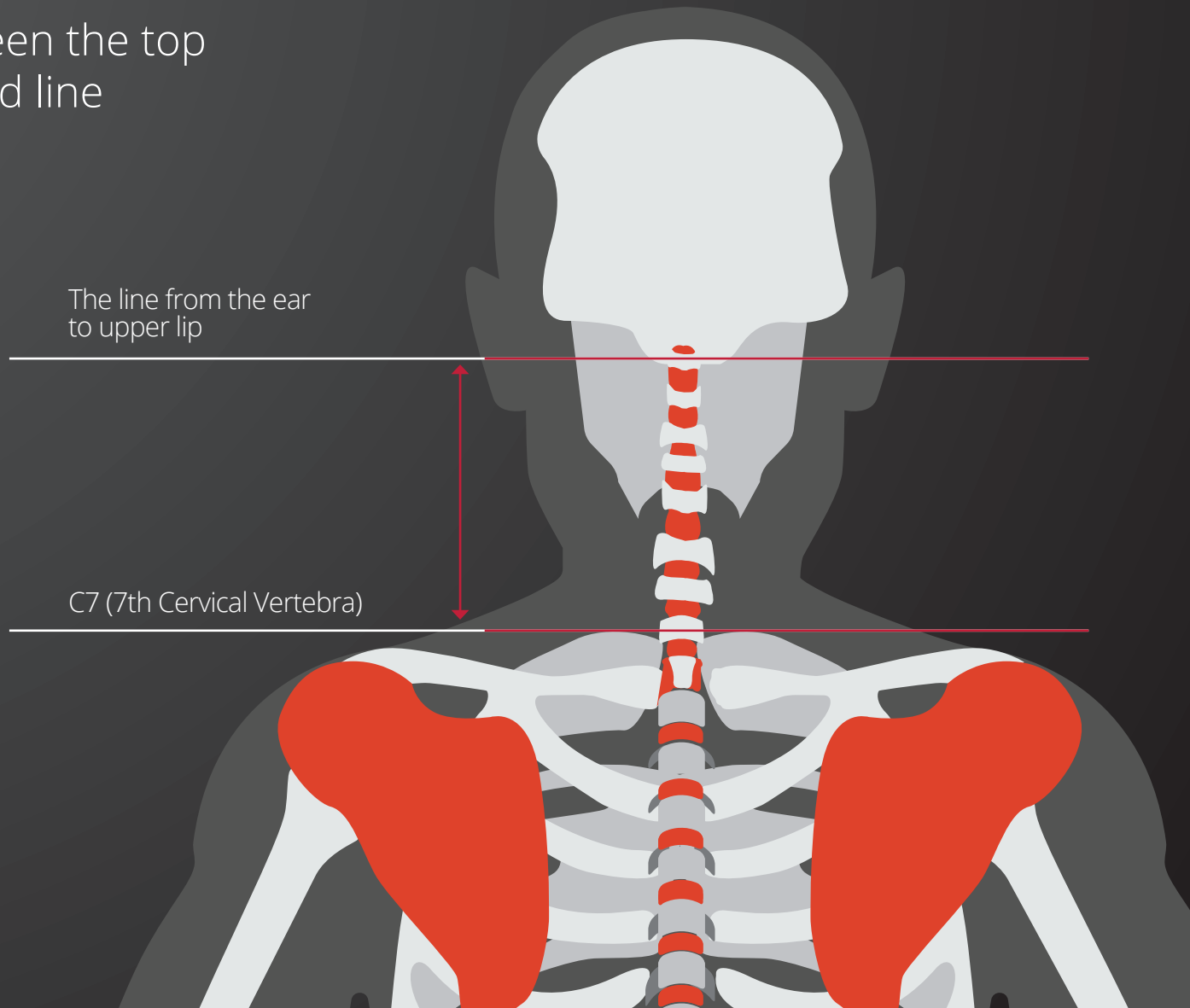


... Length definition

Neck

NOITOM™

The length of neck between the top red line to the bottom red line

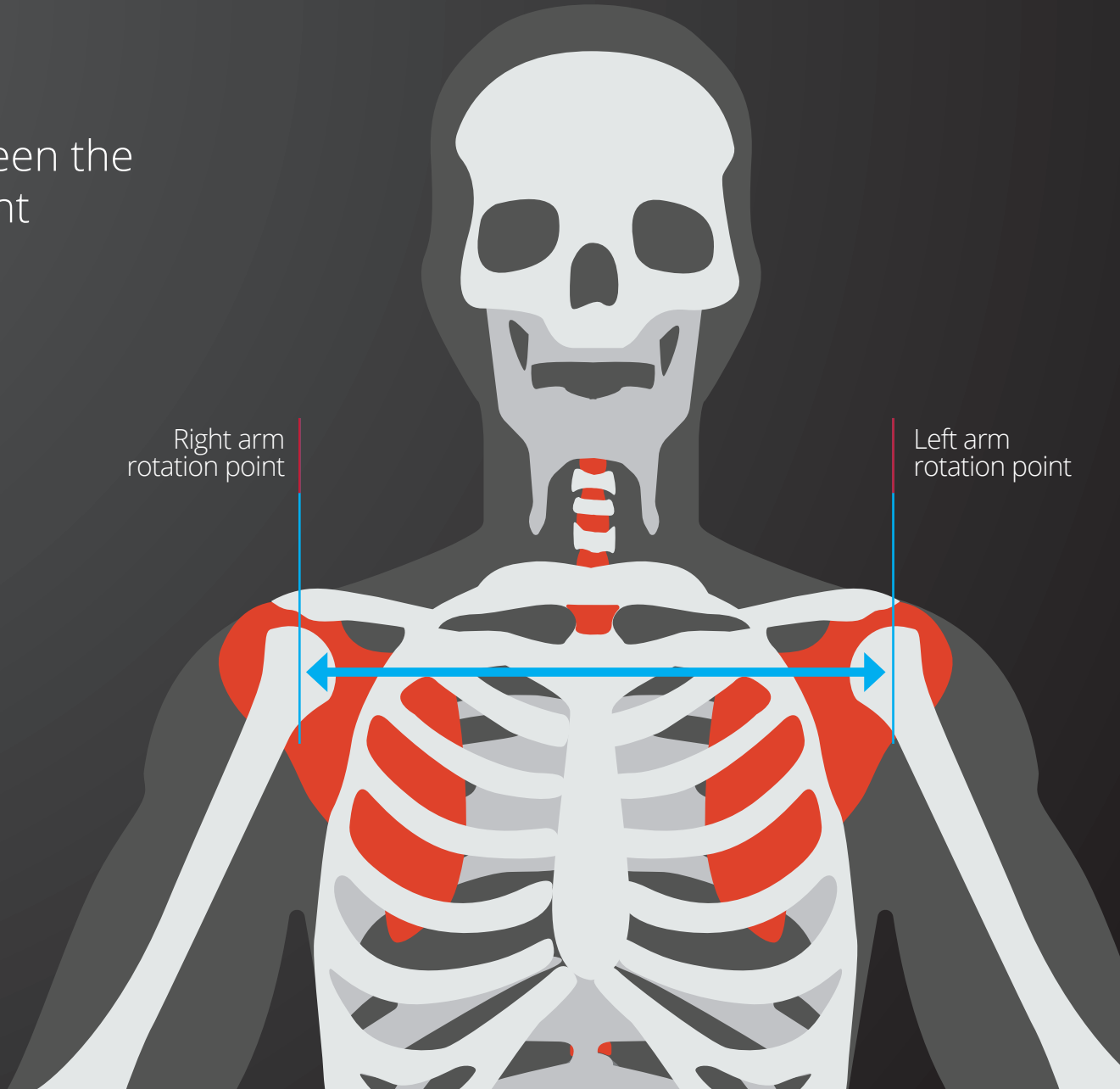


... Length definition

Shoulder width

NOITOM™

The shoulder length is between the left to right arm rotation point

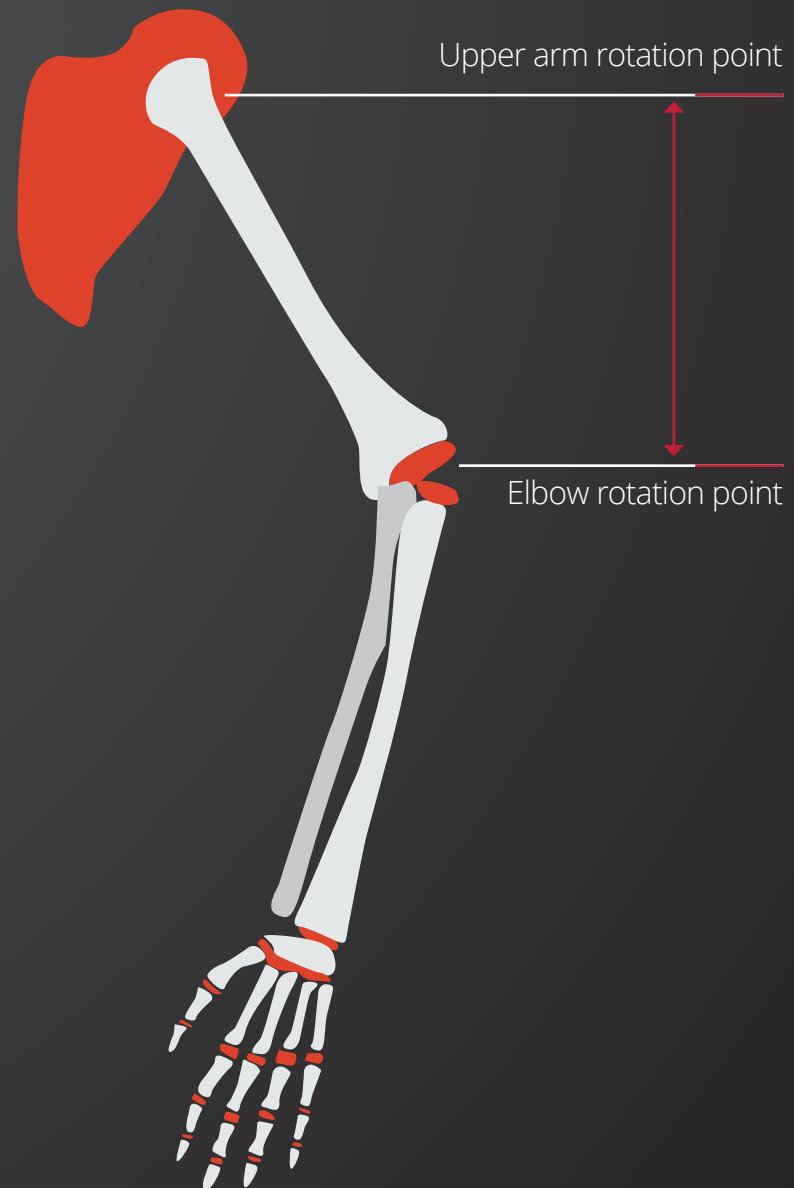


... Length definition

Upper arm

NOITOM™

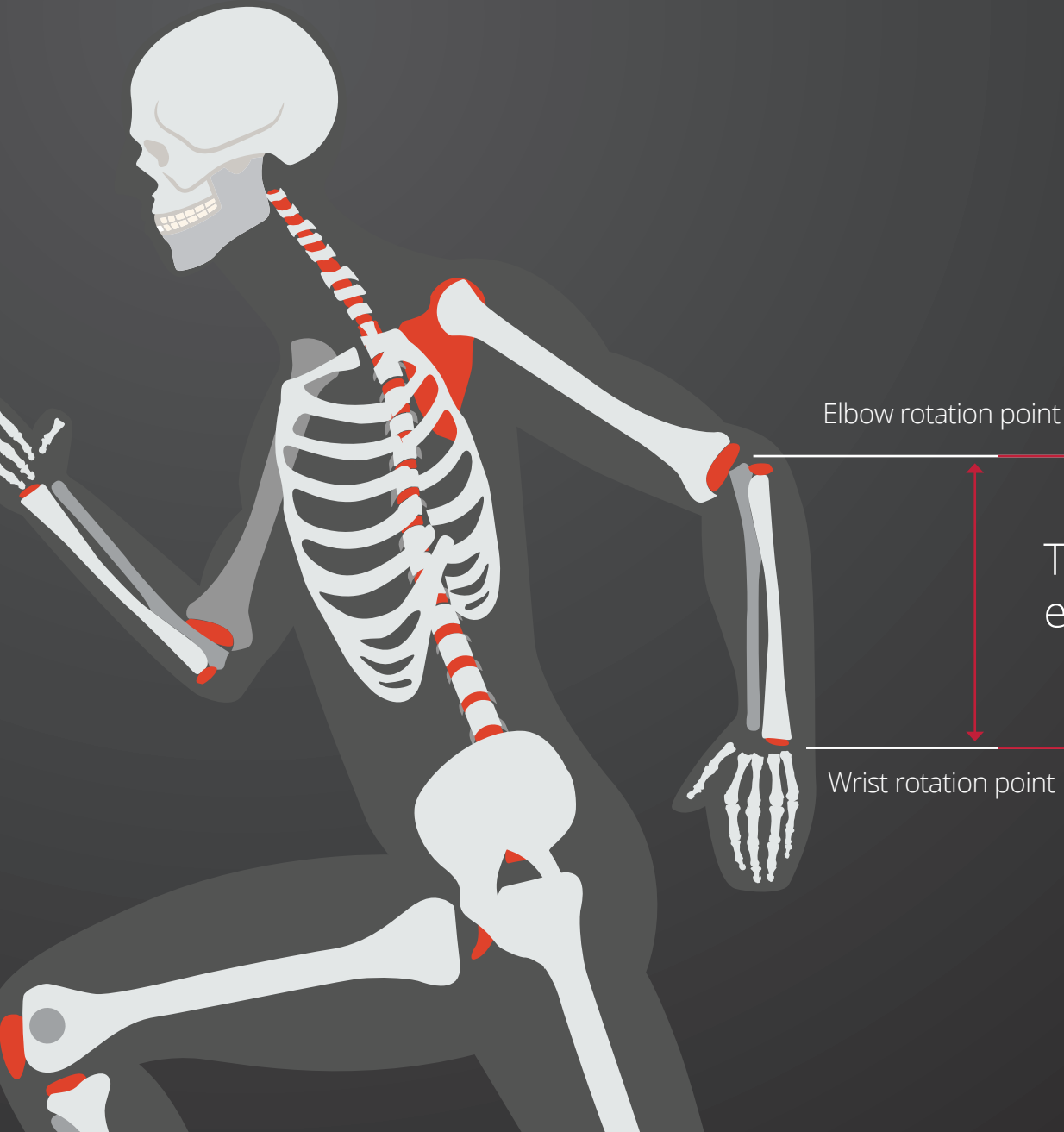
The length of the upper arm from the upper arm rotation point to elbow



... Length definition

Forearm

NOITOM™



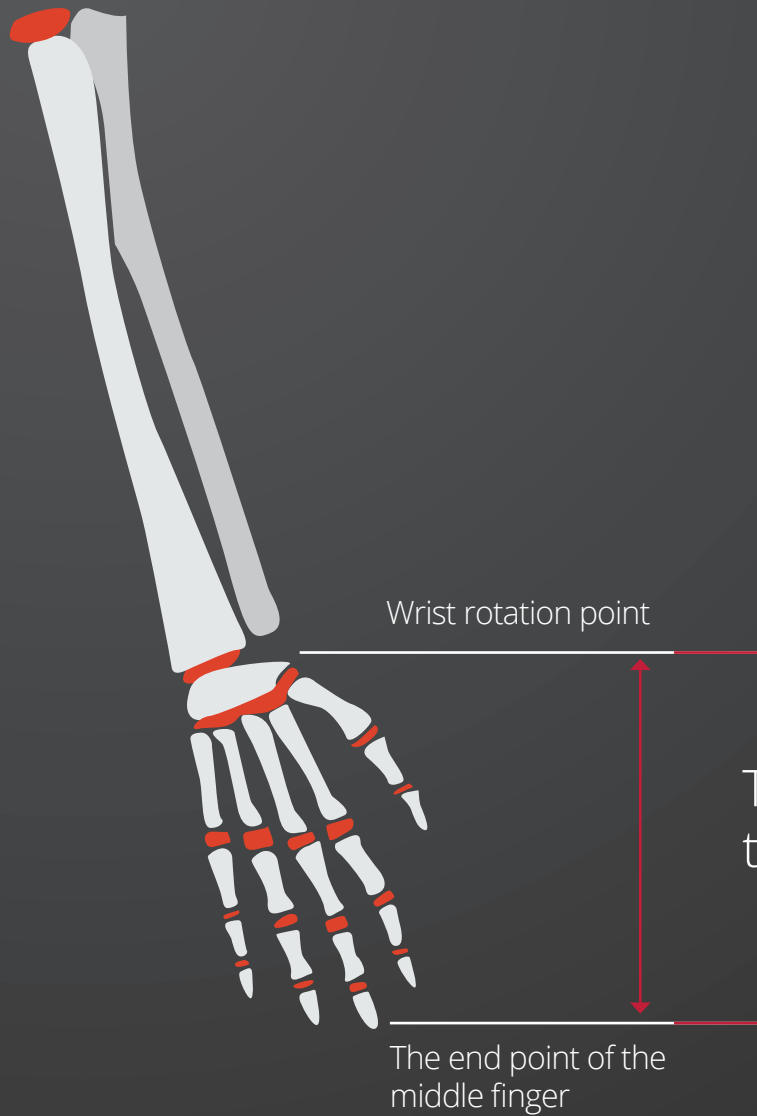
Elbow rotation point

The forearm length is between the elbow rotation point and the wrist

Wrist rotation point

... Length definition

Palm



The length of the palm is between the wrist to the end point of the middle finger

... Length definition

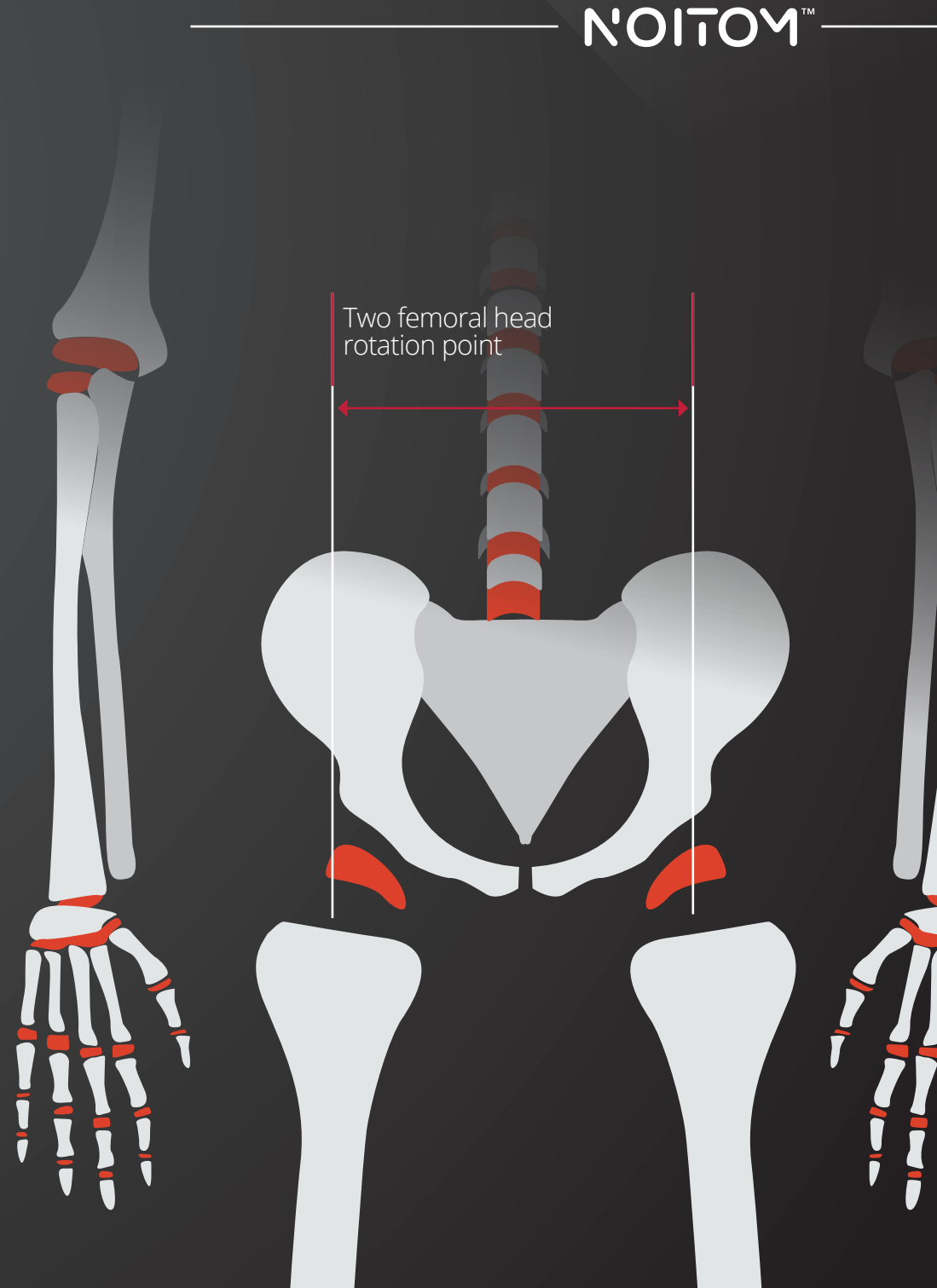
Hip width

The highest point of the front projection of the hip on the body

The hardest point at the side of the thigh

Between these two points are the femoral head rotation point

The length between two femoral head rotation point



NOITOM™

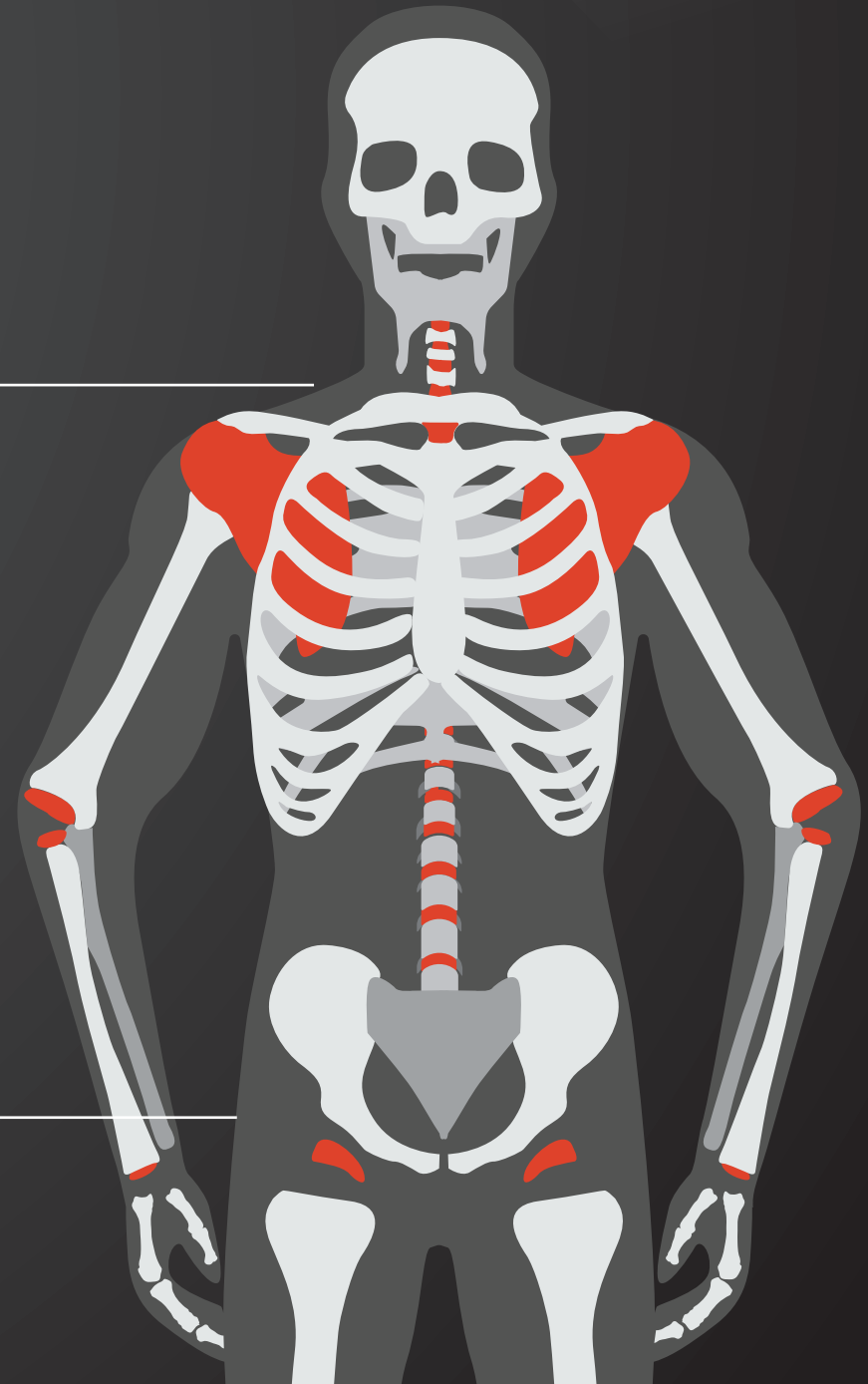
... Length definition Body

NOITOM™

The length of the body is between C7
to the femoral heads rotation point

C7

Two hips
rotation point



... Length definition

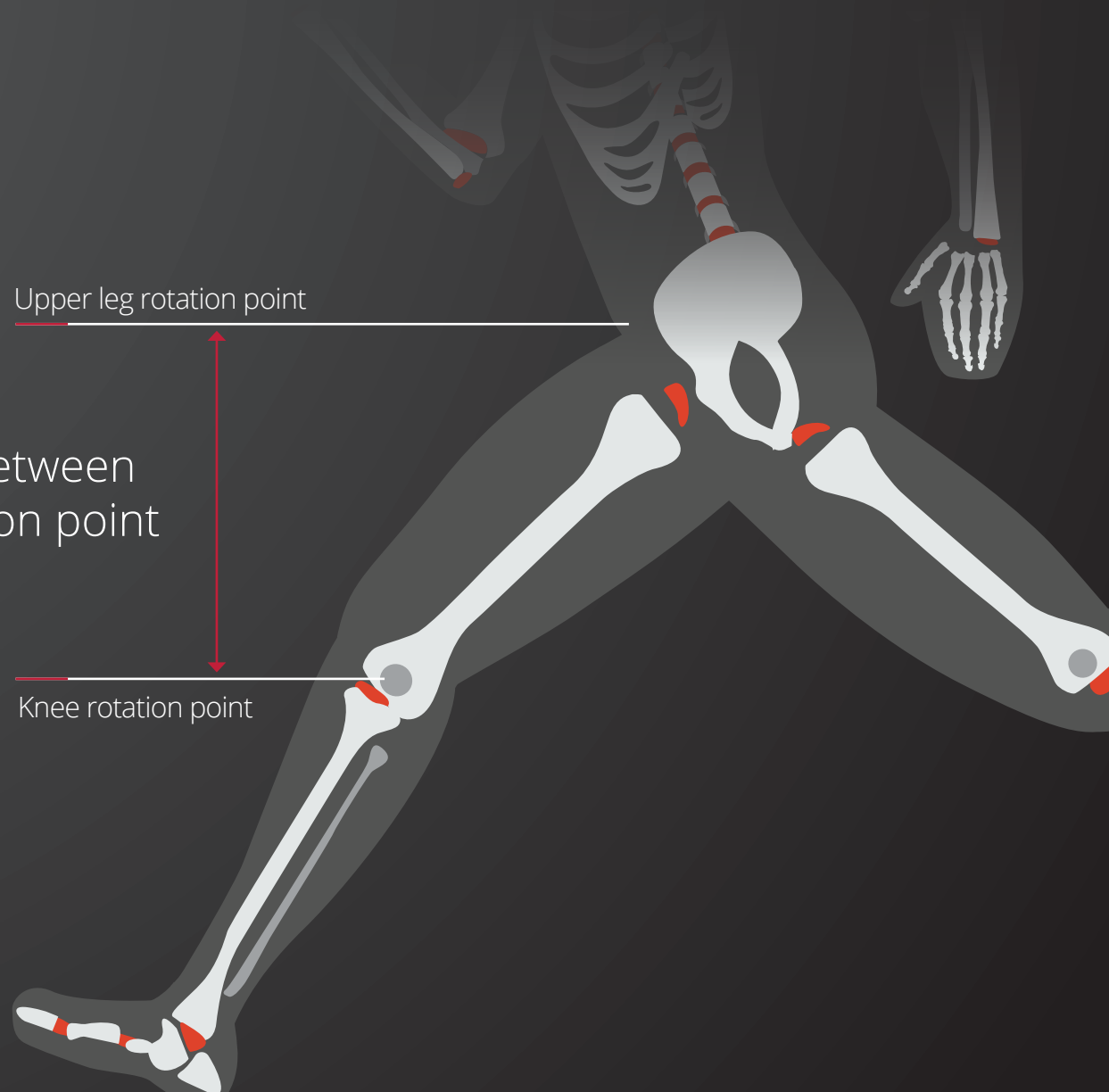
Upper leg

NOITOM™

The length of the upper leg is between the upper leg to the knee rotation point

Upper leg rotation point

Knee rotation point



... Length definition

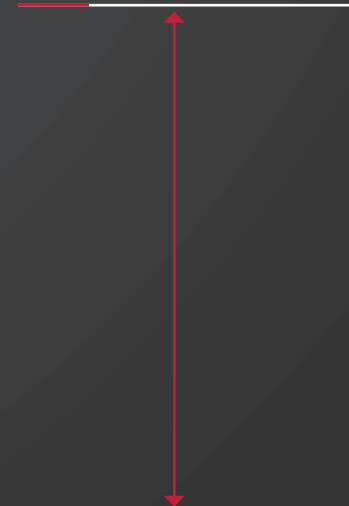
Lower leg

The length of the lower leg is between the knee to ankle rotation point

Knee rotation point

Ankle

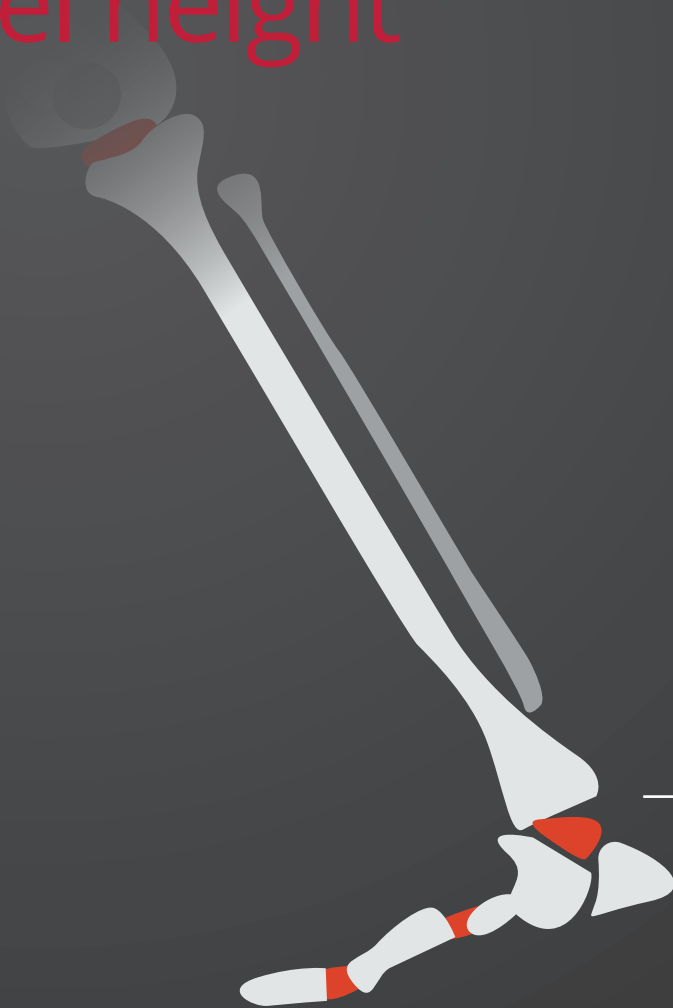
N'OTOM™



... Length definition

Heel height

NOITOM™



Ankle

The heel height is between the ankle to the floor

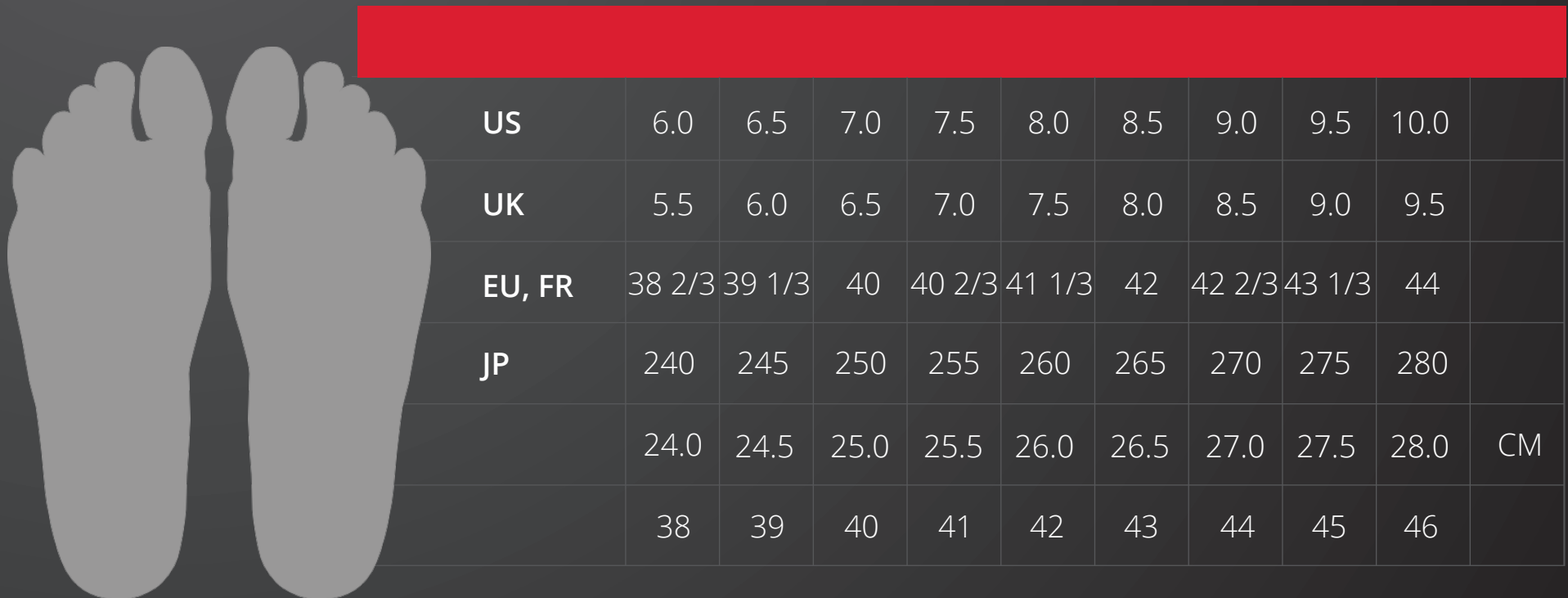
Floor

... Length definition

Foot length

NOITOM™

The length of the foot according to the shoe size



The diagram shows a grey silhouette of a man's foot on the left. To its right is a table with a red header bar. The table lists shoe sizes in US, UK, EU, FR, and JP systems, along with foot length in centimeters (CM).

	6.0	6.5	7.0	7.5	8.0	8.5	9.0	9.5	10.0	
US	6.0	6.5	7.0	7.5	8.0	8.5	9.0	9.5	10.0	
UK	5.5	6.0	6.5	7.0	7.5	8.0	8.5	9.0	9.5	
EU, FR	38 2/3	39 1/3	40	40 2/3	41 1/3	42	42 2/3	43 1/3	44	
JP	240	245	250	255	260	265	270	275	280	
	24.0	24.5	25.0	25.5	26.0	26.5	27.0	27.5	28.0	CM
	38	39	40	41	42	43	44	45	46	

Diagram of the man's shoe sizes

... Length definition

Foot length

NOITOM™

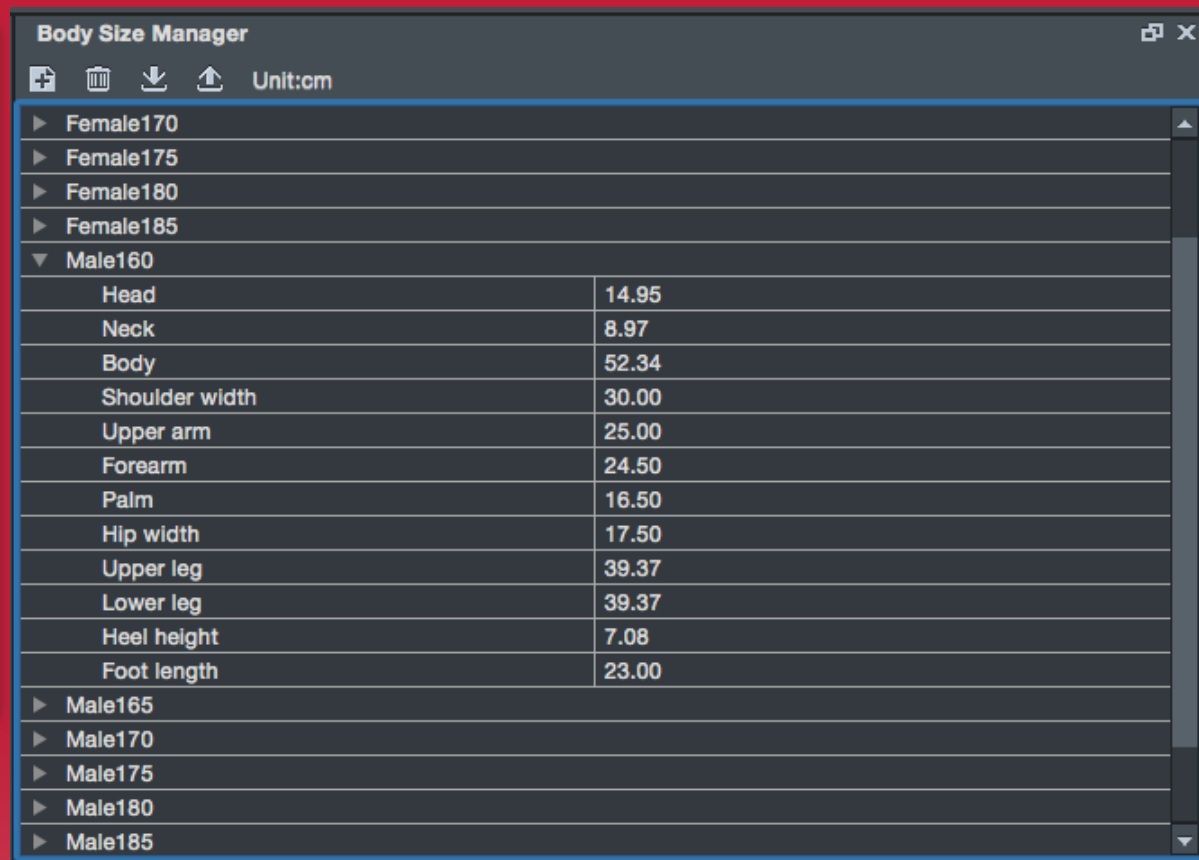


	5.0	5.5	6.0	6.5	7.0	7.5	8.0	8.5	9.0	
US	5.0	5.5	6.0	6.5	7.0	7.5	8.0	8.5	9.0	
UK	4.0	4.5	5.0	5.5	6.0	6.5	7.0	7.5	8.0	
EU, FR	38 2/3	39 1/3	40	40 2/3	41 1/3	42	42 2/3	43 1/3	44	
JP	220	225	230	235	240	245	250	255	260	
	22.0	22.5	23.0	23.5	24.0	24.5	25.0	25.5	26.0	CM
	34	35	36	37	38	39	40	41	42	

Diagram of the woman's shoe sizes

... Skeleton data apply

- Input the skeleton data that's already been measured into the software's skeleton management panel
- You can save it and for later use



... Skeleton proportion switch

In the skeleton management window, select the one you need

DURING DATA CAPTURING:

- Every time you do the calibration the skeleton is abinding with it, if you need to change to a different proportion of the skeleton, you need to do the calibration again.

DURING DATA REPLAY:

- You need to hit the play button in order for the changes to become effective.

... Exercise

Measured between the team members,
make a comparison between the
measured data, average reduce errors.



... Thank you

www.NOITOM™.com